

**CLGN Antibody**  
**Purified Mouse Monoclonal Antibody**  
**Catalog # AO2298a****Specification****CLGN Antibody - Product Information**

Application	<b>WB, IHC, FC, ICC, E</b>
Primary Accession	<a href="#">O14967</a>
Reactivity	<b>Human</b>
Host	<b>Mouse</b>
Clonality	<b>Monoclonal</b>
Isotype	<b>IgG1</b>
Calculated MW	<b>70kDa KDa</b>

**Description**

Calmegin is a testis-specific endoplasmic reticulum chaperone protein. CLGN may play a role in spermatogenesis and infertility.

**Immunogen**

Purified recombinant fragment of human CLGN (AA: 249-405) expressed in E. Coli.

**Formulation**

Purified antibody in PBS with 0.05% sodium azide

**CLGN Antibody - Additional Information**

**Gene ID** 1047

**Other Names**

Calmegin, CLGN

**Dilution**

WB~~1/500 - 1/2000

IHC~~1/200 - 1/1000

FC~~1/200 - 1/400

ICC~~N/A

E~~1/10000

**Storage**

Maintain refrigerated at 2-8°C for up to 6 months. For long term storage store at -20°C in small aliquots to prevent freeze-thaw cycles.

**Precautions**

CLGN Antibody is for research use only and not for use in diagnostic or therapeutic procedures.

**CLGN Antibody - Protein Information**

**Name** CLGN

### Function

Functions during spermatogenesis as a chaperone for a range of client proteins that are important for sperm adhesion onto the egg zona pellucida and for subsequent penetration of the zona pellucida. Required for normal sperm migration from the uterus into the oviduct. Required for normal male fertility. Binds calcium ions (By similarity).

### Cellular Location

Endoplasmic reticulum membrane; Single-pass type I membrane protein

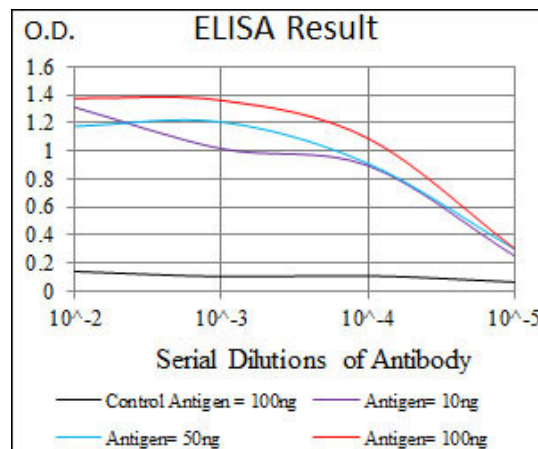
### Tissue Location

Detected in testis (at protein level). Detected in testis.

## CLGN Antibody - Protocols

Provided below are standard protocols that you may find useful for product applications.

- [Western Blot](#)
- [Blocking Peptides](#)
- [Dot Blot](#)
- [Immunohistochemistry](#)
- [Immunofluorescence](#)
- [Immunoprecipitation](#)
- [Flow Cytometry](#)
- [Cell Culture](#)



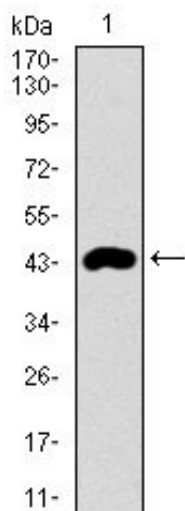


Figure 1: Western blot analysis using CLGN mAb against human CLGN recombinant protein. (Expected MW is 43.5 kDa)

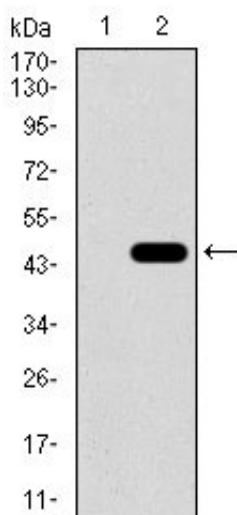


Figure 2: Western blot analysis using CLGN mAb against HEK293 (1) and CLGN (AA: 249-405)-hIgGFc transfected HEK293 (2) cell lysate.

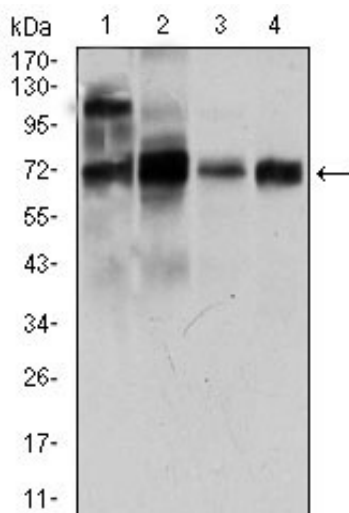


Figure 3: Western blot analysis using CLGN mouse mAb against LNCaP (1), HepG2 (2), PC-3 (3), and Raji (4) cell lysate.

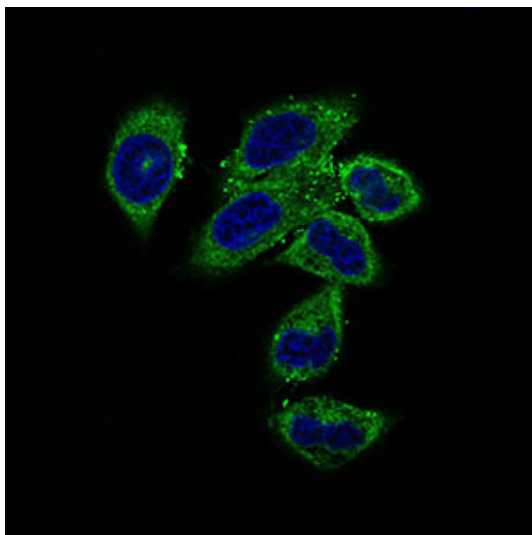


Figure 4: Immunofluorescence analysis of HepG2 cells using CLGN mouse mAb (green). Blue: DRAQ5 fluorescent DNA dye.

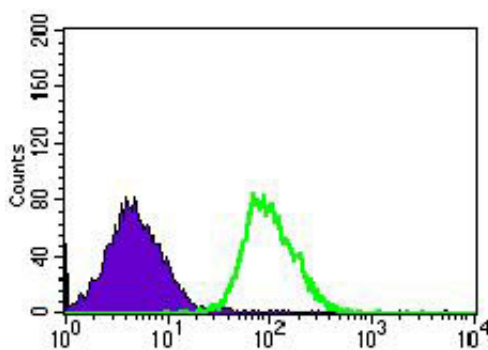


Figure 5: Flow cytometric analysis of HEK293 cells using CLGN mouse mAb (green) and negative control (purple).

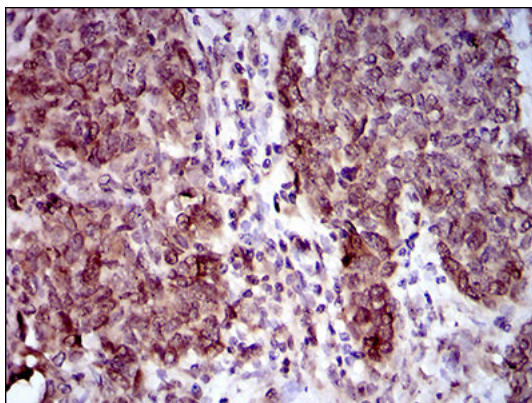


Figure 6: Immunohistochemical analysis of paraffin-embedded breast cancer tissues using CLGN mouse mAb with DAB staining.

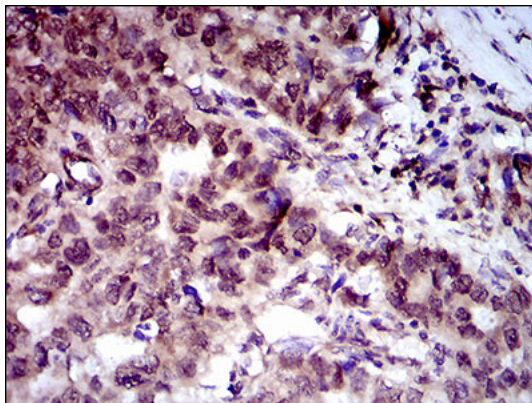


Figure 7: Immunohistochemical analysis of paraffin-embedded esophageal cancer tissues using CLGN mouse mAb with DAB staining.

### CLGN Antibody - References

1. Arch Histol Cytol. 1999 Aug;62(3):283-93. 2. Dev Biol. 2001 Dec 1;240(1):254-61.